

CARNAHAN · PROCTOR · CROSS, INC.

CONSULTING ENGINEERS · SURVEYORS · PLANNERS
3931 RCA BOULEVARD, SUITE 3114, PALM BEACH GARDENS, FLORIDA, 33410
PHONE: 561-799-5515 FAX: 561-799-5643

OCTOBER 2003

021107

DRL

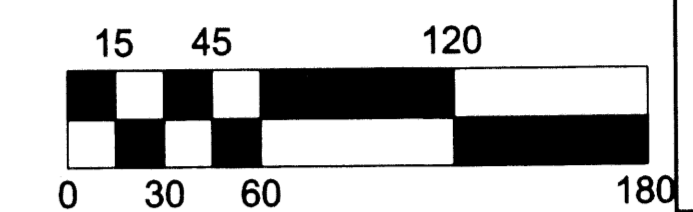
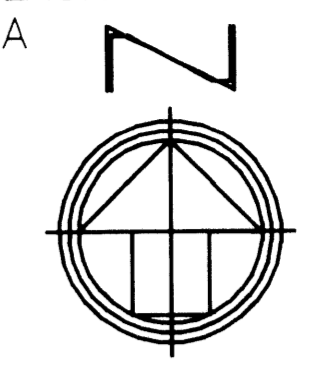
OSPREY ISLES, A P.U.D.

BEING A REPLAT OF A PORTION OF SHALOM MEMORIAL PARK, AS RECORDED IN PLAT BOOK 31, PAGE 194, PUBLIC RECORDS OF PALM BEACH COUNTY, FLORIDA, TOGETHER WITH A PORTION OF SECTION 14, TOWNSHIP 42 SOUTH, RANGE 41 EAST, PALM BEACH COUNTY, FLORIDA

799-001

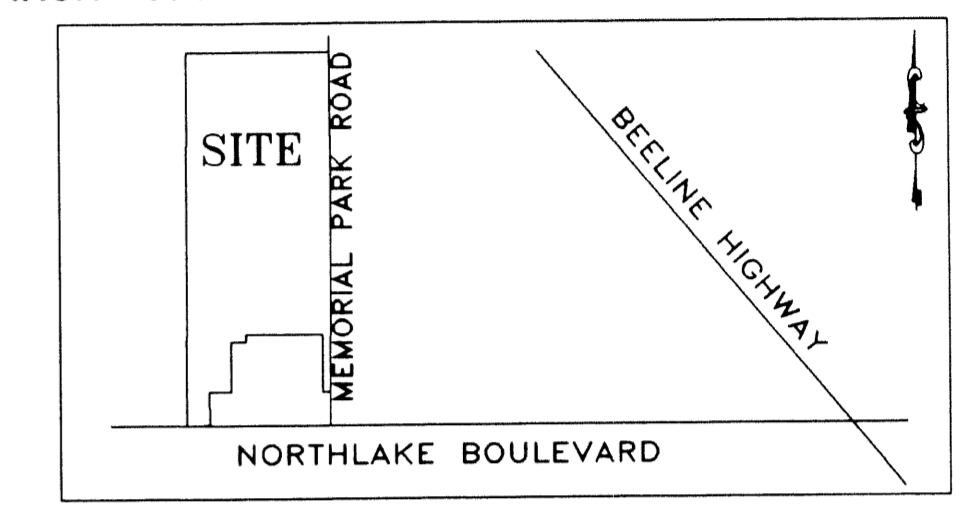
75

SEE SHEET 5 OF 6

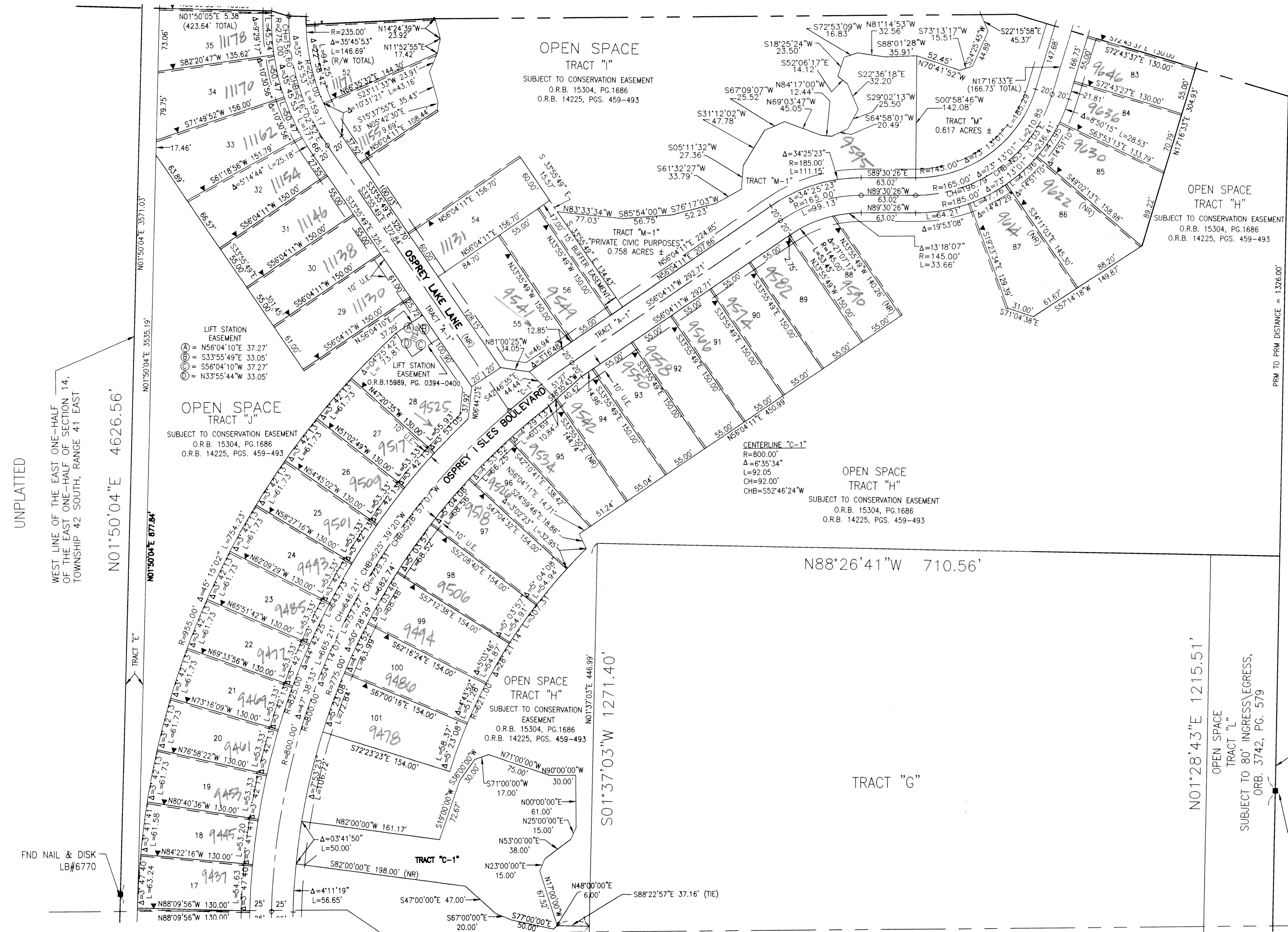


(IN FEET)
1 INCH = 60 FT.

SHEET 4 OF 6



LOCATION MAP
(NOT TO SCALE)



UNPLATTED

WEST LINE OF THE EAST ONE-HALF OF THE EAST ONE-HALF OF SECTION 14, TOWNSHIP 42 SOUTH, RANGE 41 EAST

N01°50'04"E 4626.56'

LIFT STATION EASEMENT
⊙ N56°04'10"E 37.27'
⊙ S33°55'49"E 33.05'
⊙ S56°04'10"W 37.27'
⊙ N33°55'44"W 33.05'

OPEN SPACE TRACT "J"
SUBJECT TO CONSERVATION EASEMENT
O.R.B. 15304, PG.1686
O.R.B. 14225, PGS. 459-493

OPEN SPACE TRACT "I"
SUBJECT TO CONSERVATION EASEMENT
O.R.B. 15304, PG.1686
O.R.B. 14225, PGS. 459-493

OSPREY LAKE LINE

OSPREY ISLES BOULEVARD

CENTERLINE "C-1"
R=800.00'
Δ=6°35'34"
L=92.05'
CH=92.00'
CHB=552'46"24"W

OPEN SPACE TRACT "H"
SUBJECT TO CONSERVATION EASEMENT
O.R.B. 15304, PG.1686
O.R.B. 14225, PGS. 459-493

N88°26'41"W 710.56'

OPEN SPACE TRACT "H"
SUBJECT TO CONSERVATION EASEMENT
O.R.B. 15304, PG.1686
O.R.B. 14225, PGS. 459-493

TRACT "G"

S01°37'03"W 1271.40'

N01°28'43"E 1215.51'

OPEN SPACE TRACT "L"
SUBJECT TO 80' INGRESS/EGRESS,
ORB. 3742, PG. 579

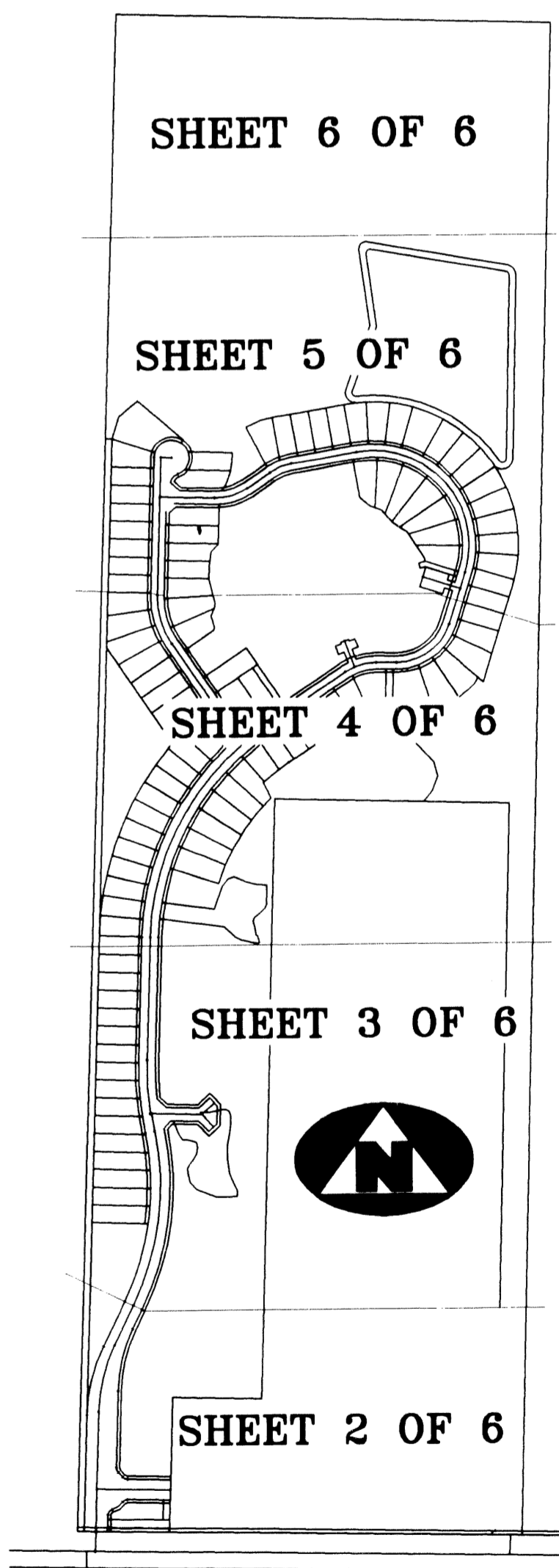
EAST LINE OF SECTION 14, TOWNSHIP 42 SOUTH, RANGE 41 EAST

S01°28'43"W 4214.42'

CARLETON OAKS
(P.B. 92, PG. 145-154, P.B.C.R.)

PRM TO PRM DISTANCE = 1326.00'

FND 4"x4" CM "LB 6674"



SHEET INDEX
(NOT TO SCALE)

SEE SHEET 3 OF 6

SUBDIVISION OSPREY ISLES
BOOK 101
PAGE 75
PLAT MAP # 50 B
ZONING PUD
QUAD # 58
ZIP CODE 33412
TAX 825
PUD NAME OSPREY ISLES

FILE: W:\Projects\021107\carap\plot\SH4.dwg
DATE: 24-Oct-03